

## Installation Documentation Smartsite iXperion 1.3

Upgrade from iXperion 1.0/1.1 or install from scratch to get started with Smartsite iXperion 1.3.

- Upgrade from Smartsite iXperion 1.0/1.1: Described in this Installation Document.
  - Install from scratch: Described in this Installation Document.
- 

### Upgrade from Smartsite iXperion 1.0/1.1/1.2

This part describes how to upgrade an iXperion 1.0/1.1/1.2 site to 1.3. If your site is using iXperion RC1 or RC 2 you'll need to upgrade to iXperion 1.0 first and then follow the instructions in this paragraph.

#### Config Editor

1. Run the file "ConfigEditor\_1.3.msi" in the DVD folder "Setup\Config Editor"

#### SXML Editor (optional)

1. Run the file "SxmlEditor13.msi" in the DVD folder "Setup\SXML Editor"

#### Smartsite CMS and Publication

1. Install the Smartsite CMS by running the setup file in the DVD folder "Setup\CMS Setup"
2. Run the file "UpdatePublication\_1.3.exe" in the DVD folder "Setup\Publication Update"
3. Run set security from the Config editor tool.
4. Validate the site settings by running the Config Editor, select the upgraded site and click both "Validate" and "Validate Operational Status". If required modify the site to resolve any warnings and errors that may occur.

#### Enable Imageserver (optional)

1. Edit registry entry "HKEY\_LOCAL\_MACHINE\SOFTWARE\Smartsite Software\Smartsite\Sites\EmptySix\Imageserver\Enabled" to 1 if you want to use the image server in the Smartsite Manager.
- 

## Install from scratch

This part describes how to install the iXperion site "EmptySix" on a clean machine.

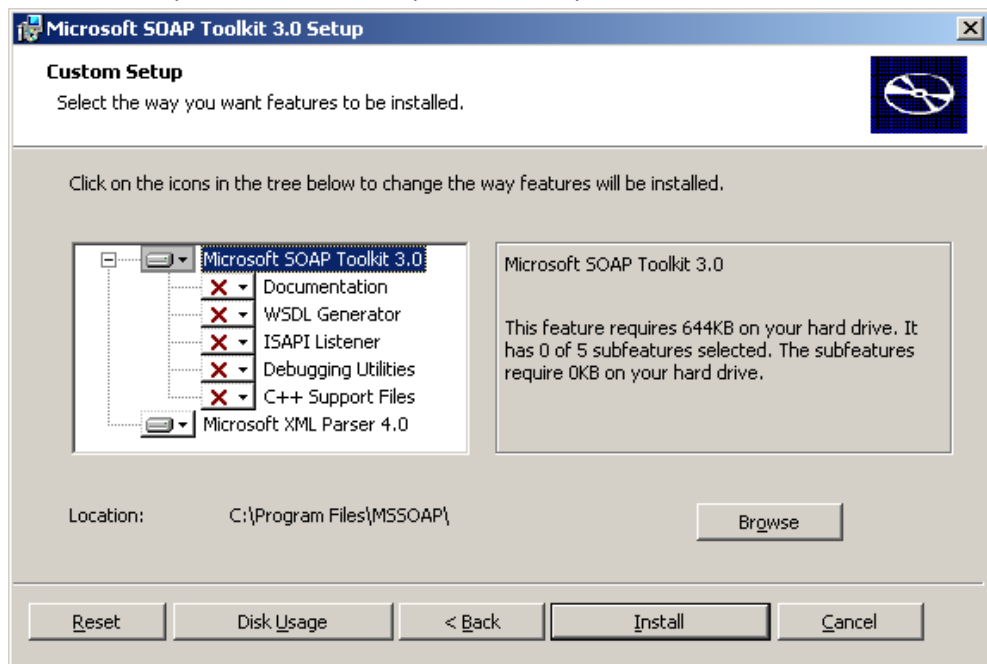
### Prerequisites

- Make sure the used account has Administrator privileges. If needed, disable User Account Control (UAC) temporarily, avoiding Registry Virtualization or explicitly disable Registry Virtualization for the Smartsite branch in the registry.
- Windows 2003/2008 having latest updates and patches installed.
- With a fresh Windows 2003 install, please install the following applications in this order:
  - IIS (Notice: First install IIS than ASP.Net)
  - ASP.NET activated (IIS, webservice extensions, allowed)
- With a fresh Windows 2008 install, please install the following roles:

- Application Server
- Web Server (IIS) with Role services: Application Development
- Smartsite iXperion license
- Database server; SQL Server 2005 or 2008 with SQL Server Authentication mode support or Oracle 10g Release 2 or Oracle 11g
- SQL Server allow remote connections
- Internet Explorer 7 in order to use the TestSuite

### Smartsite CMS and dependencies

1. Install the following applications available in the DVD folder "Setup\Required Components" in this order:
  - a. Microsoft Soap SDK. Disable the options not required, see screenshot.



- b. MSXML (both MSXML 4 Service Pack 2 and MSXML 6).  
Notice: Windows update could already have installed a newer version.
- c. (Windows 2003 Only) .NET 3.0 runtime (dotnetfx Runtime v3.0.exe)
- d. Database Tools:  
SQL Server - Make sure the CLI tool SQLCMD.exe is installed on the server (used for database creation later on) and available in the PATH variable of the Environment Variables. If not, download and install the following components of the [Microsoft SQL Server 2008 Feature Pack](#), also available on the DVD in \Setup\Required Components\Microsoft SQL Server Client Tools\
  - Microsoft SQL Server 2008 Native Client (sqlncli.msi or sqlncli\_64.msi)
  - Microsoft SQL Server 2008 Command Line Utilities (SqlCmdLnUtils.msi or SqlCmdLnUtils\_64.msi)

Make sure the appropriate version (X86, X64, IA64) is selected for the server. After installation the CLI tool SQLCMD.exe will be installed on the server. However, the PATH variable of the Environment Variables may not be set correctly. Make sure SQLCMD.exe can be invoked from any location in a command prompt.

Note: after installation of the requirements it is recommended to run Windows Update to make sure the latest patches are installed.

Oracle – Make sure SQLPlus has been installed.

Oracle Database on remote server? Download client drivers from Oracle.com. Notice: 64-bit installation with Oracle requires both the Oracle 64-bit Client installation and the Oracle 32-bit Client installation.

2. Install the Smartsite CMS by running the setup file in the DVD folder “Setup\CMS Setup” on the server. (Notice: First stop IIS and all other applications that might lock Smartsite files.)

### Smartsite EmptySix publication

1. Go to DVD folder “Sites\EmptySix” and unzip the folder EmptySix.zip” to a site folder on disk (e.g. “C:\Sites\EmptySix”)
2. Go to DVD folder “Sites\EmptySix\Database Creation Scripts”, choose the appropriate database type and run the create.cmd. Follow the instructions given in this tool and the database will be created.
3. Go to site folder “Backup” and execute “EmptySix.reg” in order to install the site configuration into the registry. On 64-bit machine execute the file “EmptySix 64-bit.reg”.

### Config Editor

1. Go to the DVD folder “Config Editor” and install “ConfigEditor\_1.3.msi”.
2. Start the Config Editor (Start, All Programs, Smartsite iXperion 1.3, Smartsite Config Editor)
3. Go to “ComputerName” node and change Sites Root Path\Local path. The SitesRootPath is the parent folder of the site folder e.g. C:\Sites
4. Go to “Sitename”(EmptySix) node, press the Unlock button and change the RootPath value with the location of the site folder e.g. C:\Sites\EmptySix\
5. Go to “Database” node and make sure the database connectionstrings are valid.

### Update publication

Next step is to run the UpdatePublication\_1.3.exe (available on the DVD in \Setup\Publication Update). This will update the site-binaries and installs the Performance Counters. You can skip database upgrade at this moment.

Notice: on 64-bit machines you also have the opportunity to install the 32-bit version for backward compatibility with custom-made binaries.

### Script debugging can cause hang ups on the server

Because the server should run unattended, messages from debuggers will be suppressed. This can hang the server in certain situation.

The reference scanner for AIM uses an “mshtml htmlDocument” to parse all the links within a document. If the user that runs the webserver has script debugging enabled, the server will hang indefinitely.

Script debugging is configured in several different ways for different components. Script debugging for mshtml can be disabled per user in the advanced options dialog in IE. But you cannot log in as the

IWAM\_servername user, so the setting should be done in the registry. The setting is "Disable Script Debugger" in HKEY\_USERS\DEFAULT\Software\Microsoft\Internet Explorer\Main. This is a string value that accepts either "yes" or "no". Set to "yes" to disable the debugger.

The other registry setting mentioned, HKEY\_CURRENT\_USER\Software\Microsoft\Windows Script\Settings\JITDebug, should be set to 0, just to be sure.

## License

1. Copy the Smartsite.Licensing.config (not included on the DVD, distributed separately) to the site root (e.g. "C:\Sites\EmptySix"). Make sure your license is activated.

## IIS 6 (Windows 2003)

1. Start the IIS management console
2. Right click the "Application Pools" node and select "New" and "Application Pool (from file)".
  - a. Browse to the DVD folder "IIS Config" and select the file "EmptySix\_IIS\_AppPools.xml". Click "Read File", select "EmptySix" and press "Ok". The application pool "EmptySix" has been created.
  - b. Repeat the previous step for Application pool "EmptySixCMS".
  - c. Start both application pools.
3. Right click the "Websites" node and select "New" and "Web site (from file)".
  - a. Browse to the DVD folder "IIS Config" and select the file "EmptySix\_IIS\_Sites.xml". Click "Read File", select "EmptySix" and press "Ok".
  - b. Go to the properties of the EmptySix website. Select tab "Home Directory" and provide the location of the WWW folder of the site (e.g. C:\Sites\EmptySix\WWW)
  - c. Provide the same path for the virtual directory "CMS".
4. Make sure the created website contains a valid port and host header value.
5. Enable the webserver extension: ASP.Net v2.0.50727
6. Start the site.

## IIS 7.\* (Windows 2008/Windows 7)

1. Start the IIS Manager
2. Right click the "Application Pools" node and select "Add Application Pool..."
  - a. Name: EmptySix, .NET Framework version: v2.0.50727, Managed pipe model: Integrated and Start application pool immediately
  - b. Right-click created Pool and select "Advanced Settings..."
    - i. Process Model > Idle Time-out: 0
    - ii. Rapid-Fail Protection > Enabled: false
    - iii. Disable Overlapped Recycle > Enabled: true
  - c. Repeat previous steps for Application Pool named EmptySixCMS. Notice: when running on 64-bit Operating System set "Enable 32-bit applications" of this EmptySixCMS application pool to "True".
3. Right click the "Sites" nodes and select "Add Web Site..."
  - a. Site name: EmptySix, Application Pool: EmptySix
  - b. Physical path: provide the location of the WWW folder of the site (e.g. C:\Sites\EmptySix\WWW)
  - c. Choose a valid address, port and hostname for the site.
  - d. Press Ok

4. Right click the “EmptySix” node and select “Add Application...”
  - a. Alias: **CMS**, Application Pool: EmptySixCMS
  - b. Physical path: provide the same location of the WWW folder of the site (e.g. C:\Sites\EmptySix\WWW)
  - c. Press Ok
5. Select the “EmptySix” node and select the ISAPI Filters feature. Right click and select “Add...”
  - a. Filter name: smartsys
  - b. Executable: C:\Windows\System32\SixSmartsys.dll (32-bit version) or C:\Windows\SysWOW64\SixSmartsys.dll (64-bit version)
  - c. Press Ok
6. **IMPORTANT:** Don’t use the IIS Manager to change any settings to the site. It can’t handle the cms application pointing to the same folder (and web.config file) as the main site. Changes should be made directly to the web.config file.

### SECURITY + CONFIG FILES (Configuration Editor)

1. You need to create four Windows users (more or less is up to you);
  - iXperion\_Guest (implementation example password: 12345\_Smartsite)
  - iXperion\_Visitor (implementation example password: 12345\_Smartsite)
  - iXperion\_User (implementation example password: 12345\_Smartsite)
  - iXperion\_Admin (implementation example password: 12345\_Smartsite)

These four user accounts need to be created on the local system (computer management/local users and groups/users) or in the domain (depending on the implementation).

2. Start the Smartsite Config editor again.
3. If you want to run the website and the CMS Manager on another address than localhost, you need to perform the following steps:
  - Select the site and unlock it.
  - Right click on Sitename (EmptySix) and choose “Set site URL”. Enter your new URL.
4. Make sure the passwords of the Windows accounts match the accounts used on your system.
5. Select the Site (EmptySix) and run the “Set Sites Security” action and follow the instructions.
6. Next step is to select the Site (EmptySix) and click “Validate” in the toolbar.
7. A number of validation errors needs to be resolved (double click the error to jump to the property that requires an update).
8. Notice: If you use encryption for the configuration files with the “RsaProtectedConfigurationProvider” option, please apply the following security rule:
 

```
“C:\WINDOWS\Microsoft.NET\Framework\v2.0.50727>aspnet_regiis -pa
NetFrameworkConfigurationKey iis_wpg” for IIS 6 and
“C:\WINDOWS\Microsoft.NET\Framework\v2.0.50727>aspnet_regiis -pa
NetFrameworkConfigurationKey iis_iusers” for IIS 7.
```
9. Notice: You customize the customerrors section in the web.config. This section enables configuration of what to do if/when an unhandled error occurs during the execution of a request. Specifically, it enables developers to configure html error pages to be displayed in

place of an error stack trace. The options are “Off” (errors are always shown, not recommended for production) and “RemoteOnly”. Remotely you can redirect remote users to another error page instead of showing the actual error. See the web.config customerrors section for more information.

10. Once all validation errors are resolved you can save the updates.
11. Validate the operational status of the site.

### Smartserver

1. Stop IIS (IIS Manager > Stop).  
You can run the site on another port by specifying a Test Server Address in the Config Editor. You won't need to stop IIS when an alternative port has been specified.
2. Start the following application “Start\All programs\Smartsite iXperion 1.3\CMS Control Panel”.
3. Start the EmptySix site and open the manager by pressing Ctrl-M.  
Log in using admin/admin. When the manager has been started, you can close it and continue with the next step.
4. Stop Smartserver and close it.

### START SITE

Start IIS again using Start, run, IISRESET. The front-end is now available at “http://localhost/”. The manager is available at “http://localhost/cms” (sign in using admin/admin).

### IIS CHECKLIST

#	ACTION	STATUS
1	Site accessible via http://localhost/	
2	Manager accessible via http://localhost/cms	
3	Add item in manager	
4	Preview item while adding item	
5	View item from manager	
6	New item browsable and visible in publication	
7	Remove item in manager	
8	Item not available any more in publication	
9	Manager\Admin\System Panel\Smartsys xml loaded and shown	

### TESTSUITE (DEVELOPER TOOL)

1. Start the TestSuite available at “Start\All programs\Smartsite iXperion 1.3\Sites\Empty Six\Test Suite”.
2. Go to Tools\Options and supply the CMS Webservice Settings using the admin account.
3. Check the “Connect to Event Subscription Service” and make sure the port is not set to a port number that conflicts with IIS. The default port 8001 is most of the times correct.
4. Click OK to close the Options dialog (TestSuite will restart).
5. TestSuite is now ready to be used. (Make sure IIS is started and both front-end and manager are running. If not, the message ‘Disconnected’ will appear in the TestSuite status bar.

Note: If you run the TestSuite in Publication Server mode you'll have to add HTTP namespace permissions to the current interactive user, if that user is not a member of the Administrators group.

### TESTSUITE CHECKLIST

#	ACTION	STATUS
1	Add item in TestSuite	
2	View item in TestSuite	
3	Check if TestSuite is in connected state	
4	Added item is available in the CMS manager	
5	Add item in the manager. Item automatically appears in TestSuite.	
6	Remove added item. Item unavailable in the TestSuite, the front-end and the managed.	

### SXML EDITOR IN MANAGER (optional)

1. The SXML editor can be used in the manager. Install the "SxmlEditor13.msi" available in the "SXML Editor" folder. By default the WebPages contains CTFP's on the field Logic in order to invoke the SXML editor.

#### Example SXMLEditor CTFP:

```
<?xml version="1.0" encoding="utf-8" ?>
<properties>
  <property name="EditProgID" type="String" roles="*">
    <![CDATA[SixSmartUI.SXMLEditor]]>
  </property>
  <property name="SchemaSetId" type="String" roles="*">
    <![CDATA[xml+xhtml1-trans]]>
  </property>
</properties>
```

2. To make sure the sxml editor runs smoothly on the client, please add the serveraddress to the trusted sites zone in Internet Explorer.